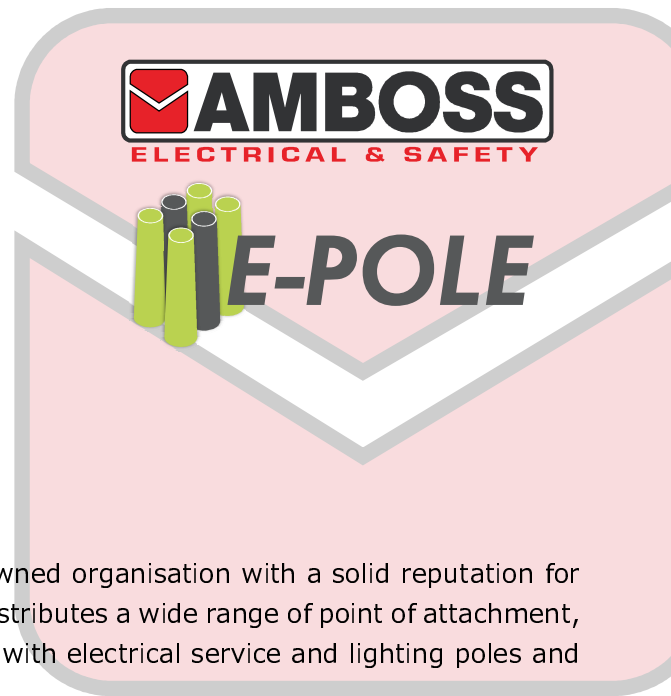


 **E-POLE**

 **AMBOSS**
ELECTRICAL & SAFETY



PROFILE

Clarke Industries and Amboss Electrical & Safety is a family owned organisation with a solid reputation for unrivalled client satisfaction. Our company manufactures and distributes a wide range of point of attachment, cable handling, protection and management equipment along with electrical service and lighting poles and energy-efficient LED lighting.

Our research and development team is constantly reviewing our product lines to ensure the most up-to-date design, technology and compliance is maintained. The aim of our company is to deliver to our customers the best possible equipment and service experience.

OUR MISSION

"To inspire and assist every individual and entity, with which we come in contact, to progress in their circumstances"

OUR VISION

"We aspire to be recognised as a key supplier of innovative, fabricated products & brands which are synonymous with good looks, quality, ease of use & installation. In doing so, we will increase the contractors' profitability by enabling them to provide a superior product economically, at a competitive price with the minimum inconvenience and time expended for both installation and use."

TERMS & CONDITIONS

Despatch: Orders will normally be dispatched same business day if they are received by 12.00pm, for overnight delivery via our carrier and subject to stock availability. Where customer specifies alternative carrier, dispatch will be subject to processing time and nominated carriers cut-off times.

Freight: Minimum order value of \$250.00 applies for FIS in NSW. Delivery charges to other states and large items available on request. A surcharge per order applies to all orders containing items over 1.5m total length.

Returns: A restocking fee of up 25% applies to all returns. Special orders and/or custom products are non-returnable.

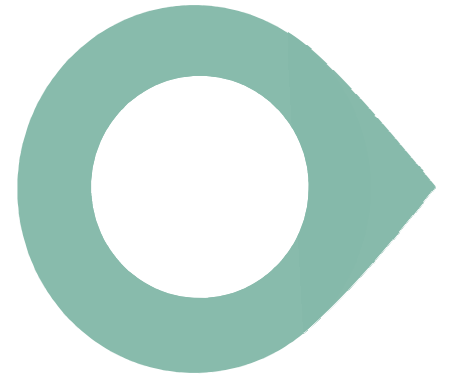
Pricing: All prices are subject to change without notice.

E & O E: Clerical errors in computations, typing or otherwise shall be subject to correction.

Please note: These Terms & Conditions are to be viewed in conjunction with Clarke Industries Full Terms and Conditions which are available on request.



CONTENTS



- **POA Brackets Clarke style**

- **POA Brackets Amboss style**

- **Kits & Accessories**

- **Service Poles**

- **Cable Handling**

- **Cable Management & Protection**

E-Pole

- **Light Poles**
- **LED Light Fittings**

- **Price List**





POINT OF ATTACHMENT BRACKETS & ACCESSORIES

P: 02 9522 7800 F: 02 9522 7900
E: sales@clarkeind.com.au

NSW Approved Point of Attachment Brackets

'B' RATED SINGLE LEG BRACKETS

Suitable for single or three phase aluminium aerial service lines up to approx. 30m in length.

For exact details regarding required bracket strength ratings for particular applications, please refer to the New South Wales Service & Installation Rules, your local Supply Authority or Service Provider.

For applications where the service line will be pulling on the bracket at an angle greater than 45° it is recommended that a "D" Rated double leg bracket is used to avoid twisting the bracket mounting.



CAT No.	NOMINAL HEIGHT	APPLICATION
---------	----------------	-------------

CI 2B1F	300mm	Fascia mount for fixing to fascia under gutter. Must be bolted through hardwood noggin of adequate strength fixed between rafters directly behind fascia board or using Clarke fascia support bracket (Part no. CI SB1/LH or /RH) M12 galvanised bolts required for fixing (not supplied)
CI 3B1F	450mm	
CI 4B1F	600mm	
CI 5B1F	750mm	
CI 6B1F	900mm	



CI 2B1R	300mm	Rafter mount for fixing to rafters behind a fascia board and flashed around penetration through roofing material. 2 x M10 galvanised rafter fixing bolts supplied. For ease of installation see Ease of Installation Products.
CI 3B1R	450mm	
CI 4B1R	600mm	
CI 5B1R	750mm	
CI 6B1R	900mm	

P: 02 9522 7800 F: 02 9522 7900
E: sales@clarkeind.com.au

NSW Approved Point of Attachment Brackets

'D' RATED DOUBLE LEG BRACKETS

Suitable for single or three phase aluminium aerial service lines up to approx. 50m in length or for any service line pulling on the bracket at an angle of greater than 45° to the perpendicular.

For exact details regarding required bracket strength ratings for particular applications, please refer to the New South Wales Service & Installation Rules, your local Supply Authority or Service Provider.



CAT No.	NOMINAL HEIGHT	APPLICATION
---------	----------------	-------------

CI 2D2F	300mm	Fascia mount for fixing to fascia under gutter. Must be bolted through hardwood noggin of adequate strength fixed between rafters directly behind fascia board or using Clarke fascia support bracket (Part no. CI SB1/LH or /RH) M12 galvanised bolts required for fixing (not supplied)
CI 3D2F	450mm	
CI 4D2F	600mm	
CI 5D2F	750mm	
CI 6D2F	900mm	

CI 2D2R	300mm	Rafter mount for fixing to rafters behind a fascia board and flashed around penetration through roofing material. 2 x M10 galvanised rafter fixing bolts supplied. For ease of installation see Ease of Installation Products.
CI 3D2R	450mm	
CI 4D2R	600mm	
CI 5D2R	750mm	
CI 6D2R	900mm	

P: 02 9522 7800 F: 02 9522 7900
E: sales@clarkeind.com.au



AMBOS

ELECTRICAL & SAFETY

POINT OF ATTACHMENT BRACKETS & ACCESSORIES

P: 02 9522 7800 F: 02 9522 7900

E: sales@clarkeind.com.au

NSW Approved Tubular Point of Attachment Brackets

'B' RATED SINGLE LEG BRACKETS

Suitable for single or three phase aluminium aerial service lines up to approx. 30m in length.

For exact details regarding required bracket strength ratings for particular applications, please refer to the New South Wales Service & Installation Rules, your local Supply Authority or Service Provider.

'SR' style brackets can have a tendency to twist when subject to sideways service line tension. For applications where the service line will be pulling on the bracket at an angle greater than 45° it is recommended that a "D" rated double leg bracket is used to avoid twisting the bracket mounting.



CAT No.	NOMINAL HEIGHT	APPLICATION
---------	----------------	-------------

AMRB2B1/SR	300mm	Single Rafter. Rafter Mount with riser in front of gutter. Designed to simplify mounting this bracket installs via 40 dia hole through Fascia under Quad style gutter or similar. No penetration of roofing material or flashing of bracket required. 2 x M10 Bolts supplied for fixing, plus 2 x T17 Tek screws.
AMRB3B1/SR	450mm	
AMRB4B1/SR	600mm	

AMRB3B1/LH	450mm	Side Mount. For fixing to rafter and penetrating through roofing material or fixing to side fascia or verandah beam. 'S' shaped tubular design allows for consumer mains to be run through centre of bracket for a neater installation and to simplify flashing of bracket where required. Available in left and right hand. Left hand bracket shown. 3 x M12 galvanised bolts required for fixing (not supplied).
AMRB3B1/RH	450mm	
AMRB4B1/LH	600mm	
AMRB4B1/RH	600mm	
AMRB5B1/LH	750mm	
AMRB5B1/RH	750mm	
AMRB6B1/LH	900mm	
AMRB6B1/RH	900mm	

P: 02 9522 7800 F: 02 9522 7900

E: sales@clarkeind.com.au

NSW Approved Tubular Point of Attachment Brackets

'B' RATED SINGLE LEG BRACKETS

Suitable for single or three phase aluminium aerial service lines up to approx. 30m in length.

For exact details regarding required bracket strength ratings for particular applications, please refer to the New South Wales Service & Installation Rules, your local Supply Authority or Service Provider.

For applications where the service line will be pulling on the bracket at an angle greater than 45° it is recommended that a "D" rated double leg bracket is used to avoid twisting the bracket mounting.



CAT No.	NOMINAL HEIGHT	APPLICATION
---------	----------------	-------------

AMRB3B1/SFG	450mm	Fascia Mount. For fixing to fascia under gutter. Must be bolted to hardwood noggin of adequate strength fixed between rafters directly behind fascia board or using Clarke fascia support bracket (Part no. CI SB1/LH or /RH) M12 galvanised bolts required for fixing (not supplied). 'S' shaped tubular design allows for consumer mains to be run through centre of bracket for a neater installation
AMRB4B1/SFG	600mm	
AMRB5B1/SFG	750mm	
AMRB6B1/SFG	900mm	

AMRB3B1/RF	450mm	Rafter / Fascia Mount. For fixing to fascia under gutter with the added strength of rafter support bar. Our strongest mounting single leg bracket, this bracket provides greater resistance to twisting when the angle of service line pull exceeds 45°. M12 galvanised bolts required for fixing (not supplied). 'S' shaped tubular design allows for consumer mains to be run through centre of bracket for a neater installation.
AMRB4B1/RF	600mm	
AMRB5B1/RF	750mm	
AMRB6B1/RF	900mm	

P: 02 9522 7800 F: 02 9522 7900

E: sales@clarkeind.com.au

NSW Approved Tubular Point of Attachment Brackets

'D' RATED DOUBLE LEG BRACKETS

Suitable for single or three phase aluminium aerial service lines up to approx. 50m in length or for any service line pulling on the bracket at an angle greater than 45° to the perpendicular.

For exact details regarding required bracket strength ratings for particular applications, please refer to the New South Wales Service & Installation Rules, your local Supply Authority or Service Provider.

CAT No.	NOMINAL HEIGHT	APPLICATION
---------	----------------	-------------

AMRB2D1/45	300 x 450mm	Double Leg Rafter. Rafter Mount with riser in front of gutter. Designed to simplify mounting this bracket installs via 2 x 40 dia holes through Fascia under Quad style gutter or similar. No penetration of roofing material or flashing of bracket required. Not suitable for full depth fascia gutters. For this application use Clarke style double leg rafter bracket which mounts behind fascia and penetrates through roofing material. Available in two widths to suit 450mm or 600mm nominal rafter spacing. Bracket legs will flex to take up minor discrepancies in rafter spacing without compromising strength. 4 x M10 Bolts supplied for fixing.
AMRB3D1/45	450 x 450mm	
AMRB4D1/45	600 x 450mm	
AMRB5D1/45	750 x 450mm	
AMRB6D1/45	900 x 450mm	
AMRB2D1/60	300 x 600mm	
AMRB3D1/60	450 x 600mm	
AMRB4D1/60	600 x 600mm	
AMRB5D1/60	750 x 600mm	
AMRB6D1/60	900 x 600mm	



P: 02 9522 7800 F: 02 9522 7900
E: sales@clarkeind.com.au









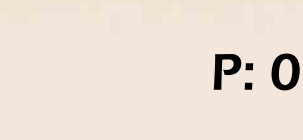
KITS & ACCESSORIES



Point of Attachment Accessories & Kits



Hook Kits etc.









CAT No.	DESCRIPTION
	CI POA2 M12 x 120mm J BOLT WITH 2 NUTS & 2 WASHERS PLUS 1 M8 x 25mm BONDING BOLT WITH 1 NUT & 2 WASHERS
	CI POA3 2 X M12 x 120mm J BOLT WITH 4 NUTS & 4 WASHERS PLUS 1 M8 x 25mm BONDING BOLT WITH 1 NUT & 2 WASHERS
	CI POA7 M12 x 120mm J BOLT WITH 2 NUTS & 2 WASHERS
	CI POA8 M12 x 280mm J BOLT WITH 2 NUTS & 2 WASHERS
	CI POAQ/10 SMALL 'Q HOOK' 10mm x 85mm L
	CI POAQ/12 LARGE 'Q HOOK' 12mm x 140mm L
	CI SH15/10 WEAK LINK (GAL S HOOK) 1.5KN STRENGTH RATING (SUPPLIED IN PACKS OF 10)
	CI PC4 4" (100NB) POLE CAP
	CI PC5 5" (125NB) POLE CAP
	CI PC6 6" (150NB) POLE CAP
	CI POA4 4" POLE KIT (CAP, 280mm J BOLT & M10 x 30mm BONDING BOLT WITH NUTS & WASHERS)
	CI POA5 5" POLE KIT (CAP, 280mm J BOLT & M10 x 30mm BONDING BOLT WITH NUTS & WASHERS)
	CI POA6 6" POLE KIT (CAP, 280MM J BOLT & M10 x 30mm BONDING BOLT WITH NUTS & WASHERS)

P: 02 9522 7800 F: 02 9522 7900
E: sales@clarkeind.com.au

Point of Attachment Accessories & Kits



Miscellaneous Brackets & Fasteners etc.

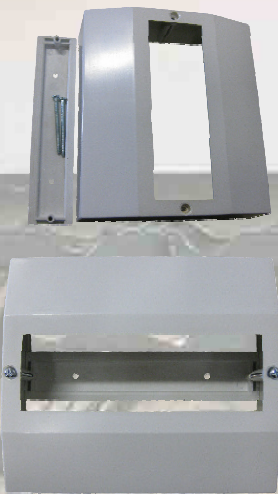
CAT No.	DESCRIPTION
	CI CSP CAVITY SUPPORT PLATE. 200mm x 200mm HOT DIP GAL PLATE FOR SPREADING THE LOAD OF POA ON STRUCTURAL BRICKWORK
	CI SB1/LH FASCIA SUPPORT BRACKET (LEFT HAND) FOR STRENGTHENING FASCIA BRACKET ATTACHMENT BEHIND FASCIA BOARD
	CI SB1/RH FASCIA SUPPORT BRACKET (RIGHT HAND) FOR STRENGTHENING FASCIA BRACKET ATTACHMENT BEHIND FASCIA BOARD
	CI AB200 200AMP SERVICE ATTACHMENT BRACKET
	CI M20DNUT M20 'D NUT' FOR 200AMP POA
	FHBFM POA FUSE MOUNTING BRACKET FOR FASCIA OR ANGLE IRON BRACKET MOUNTING. SUITS UP TO 3 x SICAME/NESCO FUSE #PFV100 695 WB
	FHBTW POA FUSE MOUNTING BRACKET. FOR AMBOSS SINGLE OR DOUBLE LEG BRACKET MOUNTING. SUITS UP TO 3 x SICAME/NESCO FUSE #PFV100 695 WB
	FHBPT POA FUSE MOUNTING BRACKET FOR POLE TOP MOUNTING. SUITS UP TO 3 x SICAME/NESCO FUSE #PFV100 695 WB

P: 02 9522 7800 F: 02 9522 7900
E: sales@clarkeind.com.au

Point of Attachment Accessories & Kits



Miniature Circuit Breaker Enclosures & Box Mounting Kits



CAT No.	DESCRIPTION
---------	-------------

CI E3	<ul style="list-style-type: none">- 3 MODULE M.C.B ENCLOSURE- INCLUDES DINRAIL- FIRE-RETARDANT PLASTIC
-------	--

CI E8	<ul style="list-style-type: none">- 8 MODULE M.C.B ENCLOSURE- INCLUDES DINRAIL- FIRE-RETARDANT PLASTIC
-------	--



BMK114	Box Mounting Kit - 114mm
BMK140	Box Mounting Kit - 140mm
BMK165	Box Mounting Kit - 165mm

P: 02 9522 7800 F: 02 9522 7900
E: sales@clarkeind.com.au

**Point of Attachment
Accessories & Kits**



Hook Kits etc.



CAT No.	DESCRIPTION
---------	-------------

AMH175S	175mm Straight POA Hook
---------	-------------------------

AMH310S	310mm Straight POA Hook
---------	-------------------------

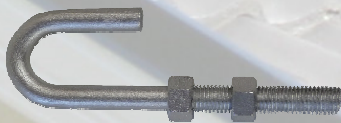
AMH445S	445mm Straight POA Hook
---------	-------------------------

AMHEXT	M12 POA Hook Extension
--------	------------------------



AMH220L	220mm Left Hand POA Hook
---------	--------------------------

AMH220R	220mm Right Hand POA Hook
---------	---------------------------



AMH90	90mm M12 J-Hook
-------	-----------------

AMH125	125mm M12 J-Hook
--------	------------------



AMH265	265mm M12 Pole Hook
--------	---------------------



AMPH140	140mm Timber Thread Pole Hook
---------	-------------------------------

AMPH230	230mm Timber Thread Pole Hook
---------	-------------------------------



AMPH140R	140mm Timber Thread Pole Ring Hook
----------	------------------------------------

P: 02 9522 7800 F: 02 9522 7900

E: sales@clarkeind.com.au

**Point of Attachment
Accessories & Kits**

Hook Kits etc.



CAT No.	DESCRIPTION
---------	-------------

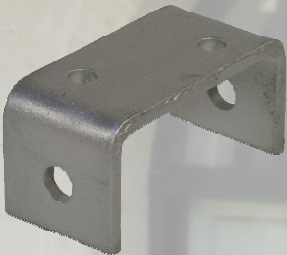
AMHQ10	10mm Q-Hook 85mmL
AMHQ12	12mm Q-Hook 140mmL



AMILM	In-Line Mount to suit POA Hooks
-------	---------------------------------



AMTBM	T-Bolt Mount to suit POA Hooks
-------	--------------------------------



AMUBM	U-Bolt Mount to suit POA Hooks
-------	--------------------------------

**P: 02 9522 7800 F: 02 9522 7900
E: sales@clarkeind.com.au**

Point of Attachment Accessories & Kits

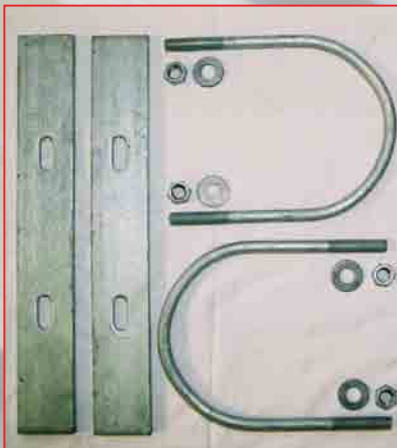


Tags



CAT No.	DESCRIPTION
CI EWT	- Strong Durable Brass - Handy Swing Tag Packs of Ten
CI EWT-5	- Assist Contractors to Comply with AS3000 Regulations
CI EWT-10	- Simple but Secure Installation Method as Shown Below

Box Mounting Kits



CAT No.	DESCRIPTION
BMK114	To suit 4" (100mm NB) Pole
BMK140	To suit 5" (125mm NB) Pole
BMK165	To suit 6" (150mm NB) Pole

P: 02 9522 7800 F: 02 9522 7900
E: sales@clarkeind.com.au

Point of Attachment Accessories & Kits



Field Power Point Brackets



CAT No.	DESCRIPTION
---------	-------------

AMFOB56	800mm high, 50x50mm Post with bracket to suit Clipsal 56 Series
---------	---



AMFOBWSC227/1	800mm high, 38x38mm Post with bracket to suit Clipsal WSC227/1 Series
---------------	---



P: 02 9522 7800 F: 02 9522 7900
E: sales@clarkeind.com.au



POINT OF ATTACHMENT SERVICE POLES & ACCESSORIES

P: 02 9522 7800 F: 02 9522 7900
E: sales@clarkeind.com.au

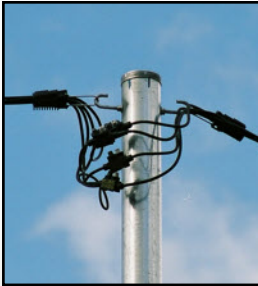
Pole Configuration

Standard Pole Configuration



Hook, Cap and 50 dia Hole for Consumer Mains at Top of pole. Slot at bottom rear of pole for underground conduit entry at 800mm from bottom of pole to top of slot. Non-standard variations available - please specify by drawing.

Intermediate Pole Configuration



Hook front and back and cap for Overhead Service Mains to Overhead Consumer Mains. No Conduit Holes. Available in all standard pole sizes. Add '/INT' to standard pole part No when ordering.

Insulated Data Line Hook



Extra hook electrically insulated from the pole, for data line connection. Generally mounted 1m down from low voltage POA to maintain 600mm minimum service segregation from bottom of low voltage drip loop. Conduit entry optional, please clearly request if required. Please check with Data Service Provider whether connection of data service to low voltage service poles is accepted. Add '/COM' to standard pole part No. when ordering.

200 and 400 Amp Service Pole



1 or 2 x M16 Bolt and 200 Amp attachment brackets fitted to suit 95mm² 4 core bunched aluminium aerial service mains. Hooded easy access configuration for ease of installation of large consumer mains. Maximum standard length 8m. Longer poles available POA.

NB: Please use care when determining size/strength rating of poles for 200 & 400 amp services. If in any doubt, please do not hesitate to ask for advice.

Bottom Entry Configuration



Standard bottom conduit entry shown. Minimum size 60mm wide x 240mm high with radiused ends to maintain integrity of pole strength. Oversized hole provided in 200 & 400 amp poles as required. Standard hole position - on rear 800mm from bottom of pole to top of slot. Alternate hole positions available on request. Conduit not supplied.

P: 02 9522 7800 F: 02 9522 7900

E: sales@clarkeind.com.au

Galvanised Steel Power Poles



Price includes delivery within Sydney Metropolitan area only, according to our standard terms and conditions of delivery. Deliveries outside Sydney Metro; POA.

For details of standard setups see Pole Configurations page. Poles for intermediate configuration, eg: aerial service main to aerial consumer main; use standard fitted pole pricing for corresponding size. Add "/INT" to part number when ordering, ie for 4"NB Part # CI P100F/INT.

CAT No.	DESCRIPTION Dia (NB) x Wall Thickness	MAX TOTAL LENGTH	STRENGTH RATING / MAX HEIGHT OUT OF GROUND*
---------	---	---------------------	---

GRADE 250 STANDARD GAUGE ROUND HDG STEEL PIPE

CI P100F	114mm (4") x 4.5mm	6.5 M	S12 / 5.2M
CI P125F	140mm (5") x 5.0mm	6.5 M	S20 / 5.2M
CI P125F/7.2	140mm (5") x 5.0mm	7.2 M	S18 / 5.8M
CI P150F	165mm (6") x 5.0mm	6.5 M	S24 / 5.2M
CI P150F/8	165mm (6") x 5.0mm	8.0 M	S21 / 6.6M
CI P150F/200	165mm (6") x 5.0mm	6.5 M	S25 / 5.1M

GRADE 350 STANDARD GAUGE ROUND HDG STEEL PIPE

CI P168F/200	168mm (6") x 4.8mm	8.0 M	S24 / 6.6M
CI P219F/200	219mm (8") x 4.8mm	8.0 M	S29 / 6.6M
CI P219F/400	219mm (8") x 4.8mm	8.0 M	S30 / 6.3M

Custom built poles to suit specific applications available on request POA.

**Strength rating based on NSW Service and Installation Rules, using max height out of ground as the free length to lowest conductor support. Max height out of ground calculated from total pole length minus minimum depth of burial based on installation in good soil or medium soil with concrete.*

P: 02 9522 7800 F: 02 9522 7900

E: sales@clarkeind.com.au

Pole Delivery Terms & Conditions

To be read in conjunction with CLARKE INDUSTRIES - AMBOSS ELECTRICAL standard Terms and Conditions of Sale.

1. F.I.S delivery to sites within the Greater Sydney Metropolitan area only. For delivery outside this area please enquire regarding price and availability of service.
2. Delivery of standard poles, normally 2-3 days. For crucial or next day delivery, please enquire prior to placement of order. CLARKE INDUSTRIES or AMBOSS ELECTRICAL is not responsible for delays in delivery caused by factors beyond our control. For non stock poles please enquire regarding lead time on placement of order. NB: While every effort is made by us to provide and adhere to time schedules and delivery appointments, delays can be caused by many factors beyond our control, including but not limited to; vehicle or equipment breakdown, traffic delays, and or delays in unloading at previous sites. In the case of any significant delay we will endeavour to inform the site contact provided as soon as it becomes apparent, provided this is practically possible and does not cause any further delay.
3. When poles are delivered to site our responsibility ends at the kerb and therefore, poles will be unloaded at the footpath or nearest safe, accessible location. If instructed by the owner, builder, contractor or whoever, to unload at another location, whether or not those persons are actually on site, and whether or not the instructions have been received verbally, in person, via telephone, in writing and or through a third party, or by any other means, then those persons will take full responsibility for any delays, injury, damage, fines, inconvenience to neighbours or any other person, incurred as a result of or whilst our operator is unloading the pole/s.
4. A pole may be delivered and crane lifted into a hole in the ground prepared by others, provided this is safe and accessible, and does not cause our driver/operator any undue delay, however, because this is a free service provided by us we are not obligated to do so and take no responsibility. The assessment of our driver/operator regarding the accessibility, safety issues, or possibility of causing undue delay, surrounding the provision of this service is final and NO negotiations or remuneration will be entered into if it is deemed unsafe, inaccessible or liable to cause any undue delay.
5. Any delays in delivery or unloading due to factors beyond our control, particularly including but not limited to; any delay caused by failure on the part of the customer or his agent to provide suitable or correct access or preparation for unloading/installation; delay caused by any particular installation method required by the customer or his agent; delay caused by failure of the customer or his agent to settle payment of any amount owing to the seller in relation to the subject delivery or any other outstanding amount; or delay caused by site specific or general OH & S requirements will be subject to additional charges. At the discretion of the driver, the delivery may be postponed and rescheduled, which will attract a failed delivery attempt charge.
6. Prior to or during the unloading of the pole/s or at any other time, we or our driver/operator may give advice or information regarding installation, location, and or compliance with regulations and the customer acknowledges that this information is provided in good faith by us, based on our own experience in the industry and our own knowledge/interpretation of the relevant regulations which is not necessarily the same experience, knowledge or interpretation as the personnel of the relevant authorities and it is the customer's own responsibility to verify the accuracy/suitability of the advice/information provided with the relevant authorities. We or our driver/operator are not obligated to provide any such advice or information and cannot be held responsible for any costs incurred by the customer as a result of information supplied and or withheld by us which is the direct or indirect cause of incorrect installation or noncompliance with regulations.

P: 02 9522 7800 F: 02 9522 7900

E: sales@clarkeind.com.au



CABLE HANDLING PRODUCTS



P: 02 9522 7800 F: 02 9522 7900

E: sales@clarkeind.com.au

CABLE DISPENSERS

CAT No.	NOMINAL SIZE LOAD RATING	APPLICATION
---------	-----------------------------	-------------

CI CR1 or AMCR02	350mm x 300mm 100Kg	<i>Cable Roller</i> Sturdy cable payout on smooth running zinc-plated rollers with heavy-duty steel ball-bearings.
CI CR6	650mm x 300mm 380Kg	Frame powder-coated "safety" yellow.

CI CS1	Height: 350mm Width: 1000mm 100Kg	<i>Cable Stand</i> Powder-coated "safety" yellow A-frames with galvanized steel axle. Quick, simple assembly. Multiple drum capacity.
--------	---	--

CI CS5 or AWAFCD01	Height: 500mm Width: 1000mm 120Kg	<i>Cable Stand</i> Powder-coated "safety" yellow A-frames with galvanized steel axle. Thumb-screw, lockable assembly. Multiple drum capacity.
CI CS8 or AWAFCD02	Height: 800mm Width: 1000mm 150Kg	

P: 02 9522 7800 F: 02 9522 7900

E: sales@clarkeind.com.au



CABLE MANAGEMENT & PROTECTION

P: 02 9522 7800 F: 02 9522 7900
E: sales@clarkeind.com.au

Cable Management & Protection

Cable Guards & Accessories

Additional mechanical protection for conduits & cables. Constructed from 1.2mm Mild Steel, with 6mm holes in sides for mounting, the cable guards are Hot Dip galvanized for durability.

Surface Mount

CAT No.	DESCRIPTION
---------	-------------

AMHS25S	25x25mm x 1.2m
AMHS35S	35x35mm x 1.2m
AMHS45S	45x45mm x 1.2m
AMHS55S	55x55mm x 1.2m
AMHS55S14	55x55mm x 1.4m
AMHS75S12	75x75mm x 1.2m
AMHS75S14	75x75mm x 1.4m
AMHS100S12	100x100mm x 1.2m
AMHS100S14	100x100mm x 1.4m

Pole Mount

CAT No.	DESCRIPTION
---------	-------------

AMHS45P	45x45mm x 1.2m
AMHS55P	55x55mm x 1.2m
AMHS75P12	75x75mm x 1.2m
AMHS75P14	75x75mm x 1.4m
AMHS100P12	100x100mm x 1.2m
AMHS100P14	100x100mm x 1.4m

P: 02 9522 7800 F: 02 9522 7900
E: sales@clarkeind.com.au

Cable Management & Protection

UGOH Channels

Hot dip galvanized 'U' section, mechanical protection channels with no side flanges, 3 metres long, to comply with Service and Installation rules of NSW, designed to protect service mains in an underground supply from an overhead distribution system. Saddle packs supplied separately. For normal installations 1 pack is sufficient per channel.

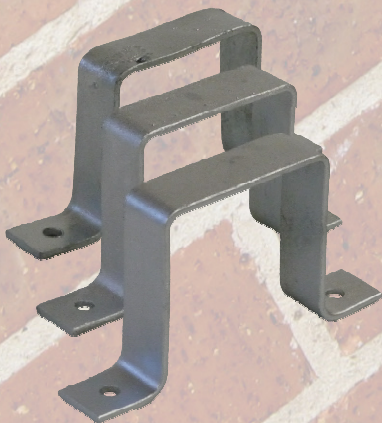


CAT No.	DESCRIPTION
---------	-------------

AMUGOH5530	55mm x 3m U Cable Guard
AMUGOH7530	75mm x 3m U Cable Guard
AMUGOH10030	100mm x 3m U Cable Guard
AMUGOH15030	150mm x 3m U Cable Guard

CAT No.	DESCRIPTION
---------	-------------

AMUGOH55SAD	55mm Cable Guard Saddles (Pack of 3)
AMUGOH75SAD	75mm Cable Guard Saddles (Pack of 3)
AMUGOH100SAD	100mm Cable Guard Saddles (Pack of 3)
AMUGOH150SAD	150mm Cable Guard Saddles (Pack of 3)



P: 02 9522 7800 F: 02 9522 7900
E: sales@clarkeind.com.au

Cable Management & Protection

Underground Marking Tape



CAT No.	LENGTH	DESCRIPTION
---------	--------	-------------

AM2101	100m	Warning Electrical Cable Below (Orange)
--------	------	---



AM2105	500m	Warning Electrical Cable Below (Orange)
--------	------	---



AM211	500m	Danger Buried Comm. Cable (White)
-------	------	-----------------------------------

P: 02 9522 7800 F: 02 9522 7900
E: sales@clarkeind.com.au



E-POLE

For *your* environment

LIGHT POLES & ACCESSORIES



P: 02 9522 7800 F: 02 9522 7900

E: sales@clarkeind.com.au

Light Poles & Accessories

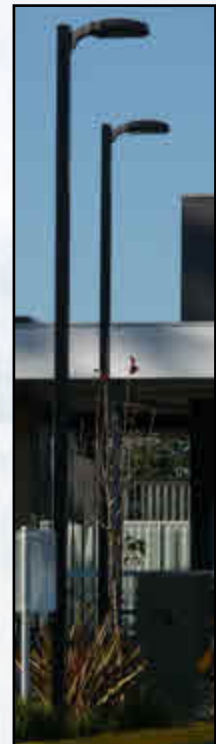
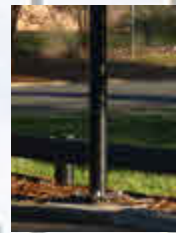
Light Poles Configuration & Details

E-Pole by Clarke Industries light poles are manufactured to a high quality standard in our Sydney workshop; designed by electrical trades persons with special attention to ease of installation and compliance to Australian Standards. Recently, we have acquired specialised machinery designed specifically for light pole manufacture.

Currently, a standard range of both tapered and straight, square and round light poles for a variety of applications are available. All poles are supplied with rag bolts and optional foundation cages are available. These ranges have been employed by a variety of organisations across NSW including Cessnock Correction Centre, the award-winning Garie Beach Surf Life-Saving Club, Coinda Retirement Village (Coonabarabran), Westmead Hospital, Lismore Mental Hospital, and a number of McDonalds stores.

Continual research & development by our company promises new designs and styles becoming available as standard items in the future.

Special sizing, direct buried conduit entry and alternate spigot specifications are all available and can be quoted on application. Contact us now for an assessment of your situation.



Various examples of light poles and installations.



P: 02 9522 7800 F: 02 9522 7900
E: sales@clarkeind.com.au

Light Poles & Accessories

Round Tapered Light Poles

All poles are supplied with rag bolts, full size access door at the base and are fitted with a cap at the top of the pole; various fitting mounting options are available, price on application. Foundation cages to suit individual site requirements are optional and prices are available on application. Quantity discounts may apply.

CAT No.	BASE DIAMETER	OVERALL HEIGHT	FINISH	SUGGESTED FOUNDATION CAGE SIZES
TLP045GAL/RB	157mm	4.5m	Galvanised	M16 x 233PCD x 1200mm
TLP06GAL/RB	170mm	6m	Galvanised	M20 x 350PCD x 1500mm
TLP07GAL/RB	185mm	7m	Galvanised	M20 x 350PCD x 1500mm
TLP08GAL/RB	201mm	8m	Galvanised	M20 x 350PCD x 1800mm
TLP09GAL/RB	212mm	9m	Galvanised	M20 x 350PCD x 2000mm
TLP10GAL/RB	227mm	10m	Galvanised	M24 x 350PCD x 2000mm
TLP12GAL/RB	254mm	12m	Galvanised	M24 x 350PCD x 2000mm



P: 02 9522 7800 F: 02 9522 7900

E: sales@clarkeind.com.au

Light Poles & Accessories

Head Frames and Outreach Arms For Tapered Light Poles

Head Frames

CAT No.	DESCRIPTION	SPIGOT SIZE / WIDTH	APPLICATION
1/2LHF100PFC	1-2 Light Head Frame	76mm spigot x 400mm wide	Suit single fitting or double fitting back to back configuration, standard trunion mount flood light up to 400mm wide
2/4LHF100PFC	2-4 Light Head Frame	76mm spigot x 1000mm wide	Suit double fitting or 4 fitting back to back configuration, standard trunion mount flood light up to 400mm wide

Outreach Arms

CAT No.	DESCRIPTION	LENGTH	APPLICATION
OR1A76/60/05	Single Outreach Arm with 60mm Horizontal Spigot at 10° Uplift	500mm	Suit single horizontal spigot mount street light type fitting.
OR1A76/60/10	Single Outreach Arm with 60mm Horizontal Spigot at 10° Uplift	1000mm	
OR2A76/60/05	Double Outreach Arm with 60mm Horizontal Spigot at 10° Uplift	500mm	Suit double back to back horizontal spigot mount street light type fitting.
OR2A76/60/10	Double Outreach Arm with 60mm Horizontal Spigot at 10° Uplift	1000mm	

All prices quoted above are for hot dip galvanised finish. Other finishes, configurations and sizes to suit specific applications/fittings available on request, POA.

P: 02 9522 7800 F: 02 9522 7900
E: sales@clarkeind.com.au

Light Poles & Accessories

Straight Round Light Poles

All poles are supplied with rag bolts and are fitted with a cap at the top of the pole; various fitting mounting options are available, price on application. No access door is fitted as standard, an optional simple inspection opening is available. Foundation cages to suit individual site requirements are optional and prices are available on application. Manufactured from hot dip galvanised material and coated with zinc rich epoxy over areas where the galvanised finish has been compromised during the fabrication process, where accessible.

CAT No.	BASE PLATE PCD / POLE DIAMETER (OD)	OVERALL HEIGHT	FINISH	SUGGESTED FOUNDATION CAGE SIZES
076LP032/RB	233/76mm	3.2m	Galvanised	M16 x 233PCD x 1000mm
076LP032PC/RB	233/76mm	3.2m	Powder coated	M16 x 233PCD x 1000mm
076LP065/RB	233/76mm	Up to 6.5m	Galvanised	M20 x 233PCD x 1500mm
076LP065PC/RB	233/76mm	Up to 6.5m	Powder coated	M20 x 233PCD x 1500mm
114LP065/RB	350/114mm	6.5m	Galvanised	M20 x 350PCD x 1500mm
114LP065PC/RB	350/114mm	6.5m	Powder coated	M20 x 350PCD x 1500mm



OPTIONS:

Simple inspection opening and cover plate

0.5m "C" channel light bar and adjustable clamp - 76mm OD poles

0.5m "C" channel light bar and adjustable clamp - 114mm OD poles

P: 02 9522 7800 F: 02 9522 7900

E: sales@clarkeind.com.au

Light Poles & Accessories

Square Light Poles

All poles are supplied with rag bolts, flush inspection opening at the base, various alternative fitting mounting options are available, price on application. Standard pricing as listed below allows for single or double face bolt pattern drilling to suit fittings with integrated outreach bracket/spigot and cap to top of pole. Foundation cages to suit individual site requirements are optional and prices are available on application. Quantity discounts may apply.

CAT No.	BASE PLATE PCD / RHS	OVERALL HEIGHT	FINISH	SUGGESTED FOUNDATION CAGE SIZES
SQLP04GAL/RB	233mm / 75mm	4m	Pre-Galvanised	M16 x 233PCD x 1200mm
SQLP04PC/RB	233mm / 75mm	4m	Powder coated	M16 x 233PCD x 1200mm
SQL06GAL/RB	350mm / 100mm	6m	Pre-Galvanised	M20 x 350PCD x 1500mm
SQLP06PC/RB	350mm / 100mm	6m	Powder coated	M20 x 350PCD x 1500mm
SQLP08GAL/RB	350mm / 100mm	8m	Pre-Galvanised	M20 x 350PCD x 2000mm
SQLP08PC/RB	350mm / 100mm	8m	Powder coated	M20 x 350PCD x 2000mm



Square Light Poles in various applications

P: 02 9522 7800 F: 02 9522 7900
E: sales@clarkeind.com.au

Light Poles & Accessories

Foundation Cages & Rag Bolt Kits

Rag bolt kits to suit existing poles available in standard sizes or custom sizes price on application.

Foundation cages can be used on all Clarke Industries baseplated light poles for ease of installation. Offered as an additional option to the standard rag bolt assembly supplied with the poles or custom sizes to suit existing poles, price on application.

CAT No.	BASE PLATE PCD / BOLT SIZE	BURIAL DEPTH (mm)	SUGGESTED APPLICATIONS / NOTES
---------	----------------------------	-------------------	--------------------------------

RBK16/233	233mm/M16	550	Steel reinforcing required but not included, see foundation cages.
RBK20/350	350mm/M20	550	Steel reinforcing required but not included, see foundation cages.
FC233/1000ADD	233/M16	1000	To suit RB16/233
FC233/1200ADD	233/M16	1200	To suit RB16/233
FC350/1500ADD	350/M20	1500	To suit RB20/350 6-8m pole
FC350/2000ADD	350/M20	2000	To suit RB20/350 9-10m pole



P: 02 9522 7800 F: 02 9522 7900

E: sales@clarkeind.com.au

Light Poles & Accessories

Corrosion Protection

Pre Galvanised

- Applies to straight, square and round style of poles
- Fabricated from "pre gal" finish material and zinc rich epoxy coated on welds and other areas where the galvanised finish has been compromised during the fabrication process, where accessible.

Hot Dip Galvanised

- Applies to tapered style of poles
- Poles are hot dip galvanised after fabrication. Due to the molten dip process, aesthetic surface finish quality may be compromised.

Special Material

- Stainless steel
- Aluminium
- Available to customer specifications - price on application



Pre-Galvanised



Hot Dip Galvanised

P: 02 9522 7800 F: 02 9522 7900

E: sales@clarkeind.com.au

Light Poles & Accessories

Finishes

Powder Coated

- Powder Coating over Pre Galvanised Corrosion Protection
 - ◆ Offers high level of aesthetic finish
 - ◆ Acceptable level of corrosion protection for most general applications.
- Powder Coating over Hot Dip Galvanised Corrosion Protection
 - ◆ Offers high level of corrosion protection
 - ◆ Aesthetic finish may be compromised by rough surface of galvanised coating and pinholes etc. due to gas dispersion from galvanised coating during the powder coating process.

Wet Painted

- This finish provides the highest level of aesthetic appearance, corrosion protection and durability.
- Higher "UV" resistance than Powder Coated finish resists fading.
- Can be applied as a multi coat procedure utilising a primer surfacer over Hot Dip galvanising, minimising the effect of the rough surface finish and other issues (associated with Powder Coating).



Powder Coated over Hot Dip Galvanising



Powder Coated over Pre Galvanising

P: 02 9522 7800 F: 02 9522 7900

E: sales@clarkeind.com.au

Light Poles & Accessories

Access Door/Terminal Cover Specifications

Simple Inspection Opening (fig 1)

- Non reinforced opening adequate size for cable access/termination.
- Stainless Steel sheet surface fitted cover
- Applies to Pre Galvanised straight round poles where specified

Flush Mount Inspection Opening (fig 2)

- Internally reinforced opening adequate size for cable access/termination.
- Flush fitted cover
- Applies to Pre Galvanised straight square poles

Full Size Flush Access Door (fig 3)

- Internally reinforced full size access hole for cable access/termination, gear mounting and internal corrosion inspection of pole
- Flush fitted cover
- Applies to Round Tapered poles



Fig 1



Fig 2



Fig 3

P: 02 9522 7800 F: 02 9522 7900
E: sales@clarkeind.com.au